

CHRISTOPHER

MEERDO

0-0.000



lightbody_astral.jpg//white_matter_of_left_cerebral_hemisphere-2.x3d, 2016
extruded polystyrene, hydrocal, plaster, hydroprint, acrylic gloss glaze



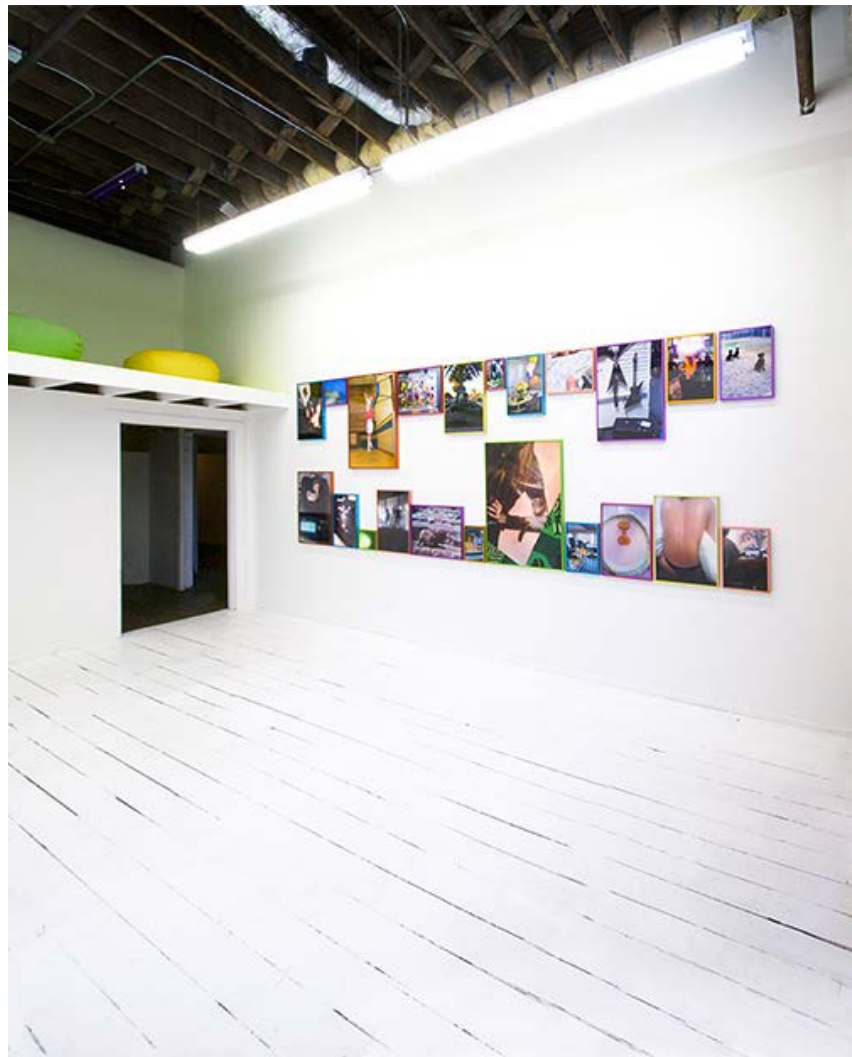
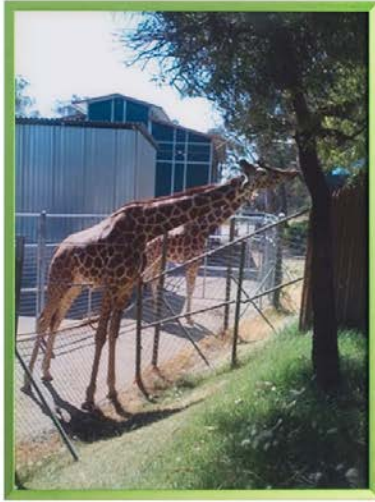
Underground Nuclear Fallout Home, Las Vegas, NV west wall detail dusk, 2016
archival digital print mounted to acrylic, 20x30" each
Wall murals, atmosphere lighting and simulated rock formations in an underground bunker home in Las Vegas, NV. Now headquarters for The Society for the Preservation of Near Extinct Species, a cryonics organization.





Cataphote, 2014
welded steel, retroreflective fabric, zippers, vacuum.
16x18x9 ft
collaboration with May Wilson

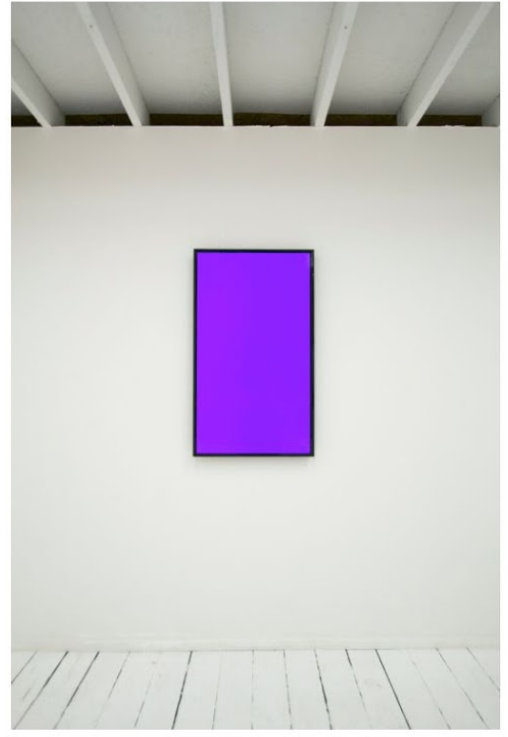
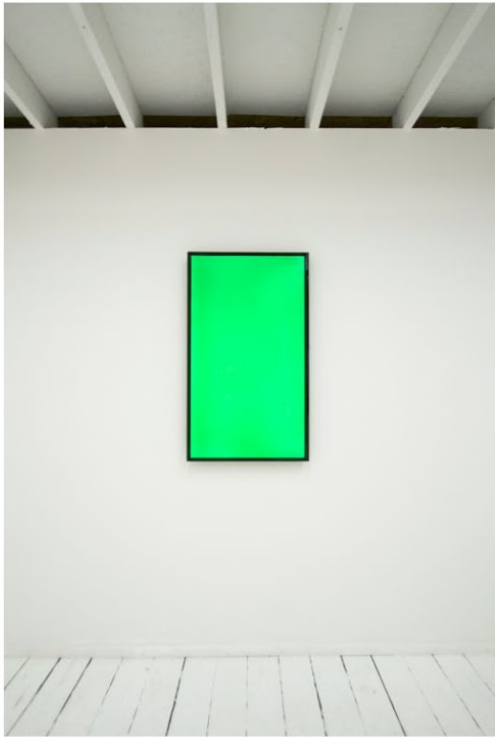




Brute-force, 2014
archival digital prints



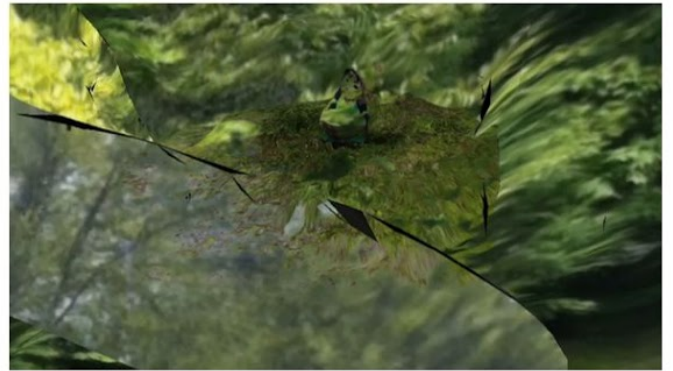
5eyes, 2014
HD video, 31:05min.
<http://vimeo.com/98768813>



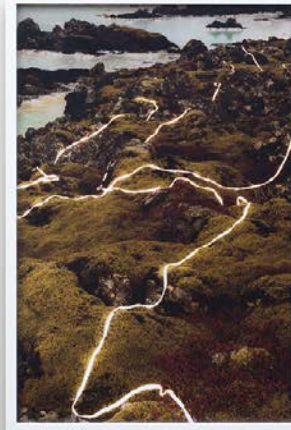
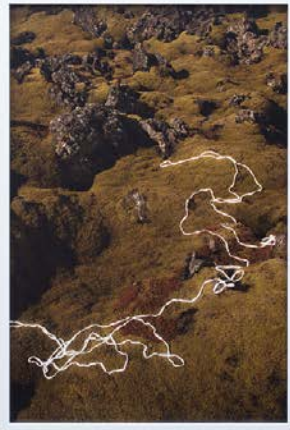
Cipher II (wlinurance-20130815-A.aes256), 2014

HD video, 5:40min

<http://vimeo.com/100543942>



Wessursett, 2013
HD video, 24:43min.
collaboration with Lindsay Lawson, Rodrigo Valenzuela, & Tzion Abraham Hazan
<http://vimeo.com/72372241>

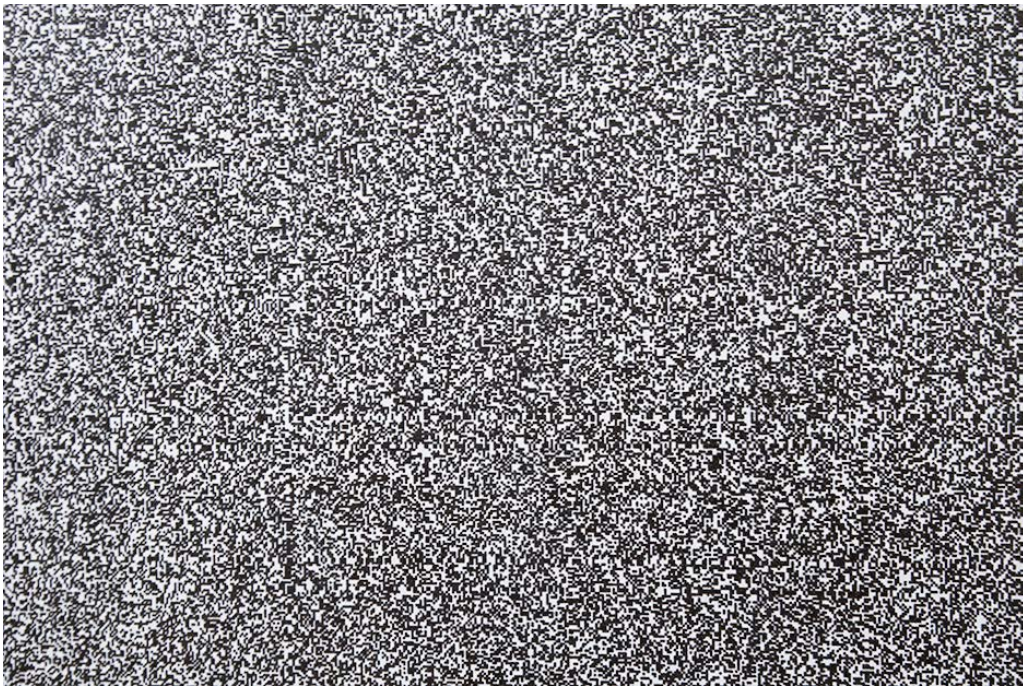






Iceland, 2013
archival digital prints
12x18 in ea.

- 1-3. Svartsengi
- 4. Kirkjufell
- 5. Hveragerði



Cipher (insurance.aes256), 2011
ultraviolet curing ink on seamless paper,
350x100 in

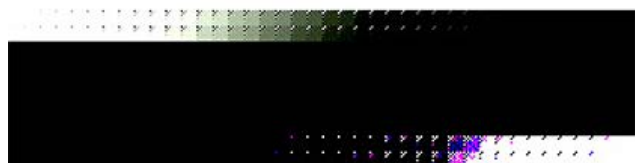
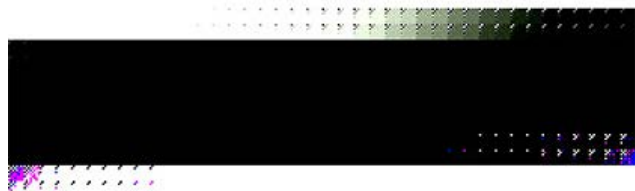
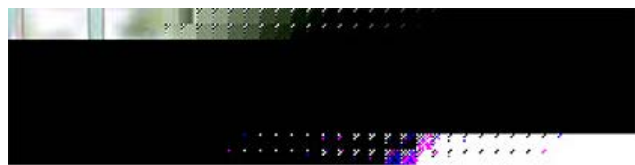


Anthology IMG38 (weed w_ shells), 2007-2015
archival inkjet print, dimensions variable
recovered image file from used memory card purchased on ebay



Anthology IMG67_1 (dyed hair).jpg, 2007-2015
archival inkjet print, dimensions variable
recovered image file from used memory card purchased on ebay





Anthology, 2007-2015
archival digital prints
dimensions variable